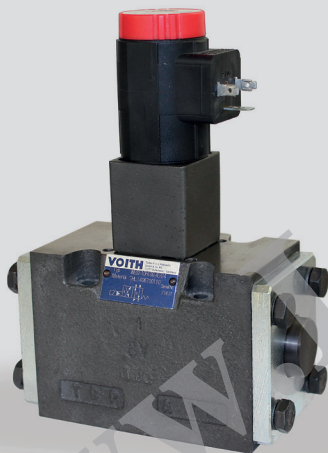


## 4/2, 4/3 Directional Control Valve, NG 10 ISO 4401, piloted

### Technical Data Sheet



## Technical Data

### General

Type of valve	piston valve
Operation	electric
Mounting	4x M6x75 DIN912
Connection of ports	mounting plate
Ambient temperature	-5 to +50 °C
Mounting position	any
Mass valve	4.0 kg

### Hydraulic

Operation pressure P,A,B	max. 315 bar
Operation pressure T	max. 150 / 315* bar
Control pressure range	3 to 315 bar
Control oil volume	2 x 1,5 cm <sup>3</sup> at 4/3 valves 3 cm <sup>3</sup> at 4/2 valves
Hydraulic oil temperature	-10 to +70 °C
Viscosity range	10 to 300 mm <sup>2</sup> /s
max. flow	160 l/min

### Electric

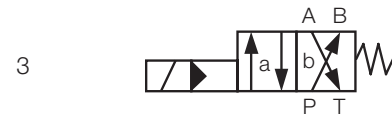
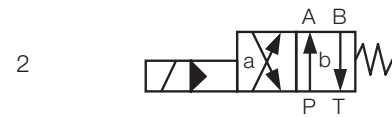
Voltage (±10%)	24 V DC	230 V, 50 Hz AC
Switching time on **	17 ms	
Switching time off ***	17 ms	
Power consumption P20	23 W	
Start up peak P20	50 VA	
Duty factor	100%	100%
Protection system	IP65 at inserted valve plug DIN 40050	

\* at external pilot oil drain

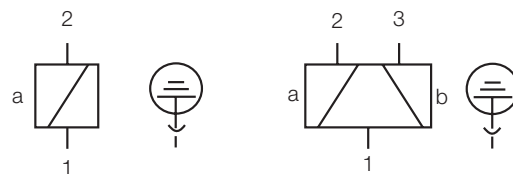
\*\* at 24V DC ± 5%

\*\*\* at terminal voltage = -50V at free circuit

## Symbol

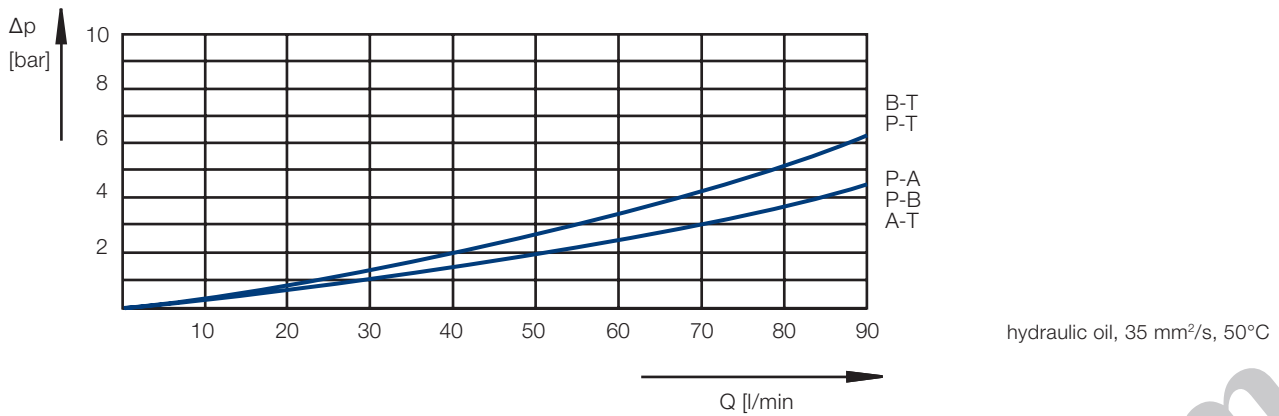


## Terminal Assignment



connector-type: DIN 43650, design A

## Characteristic Curve



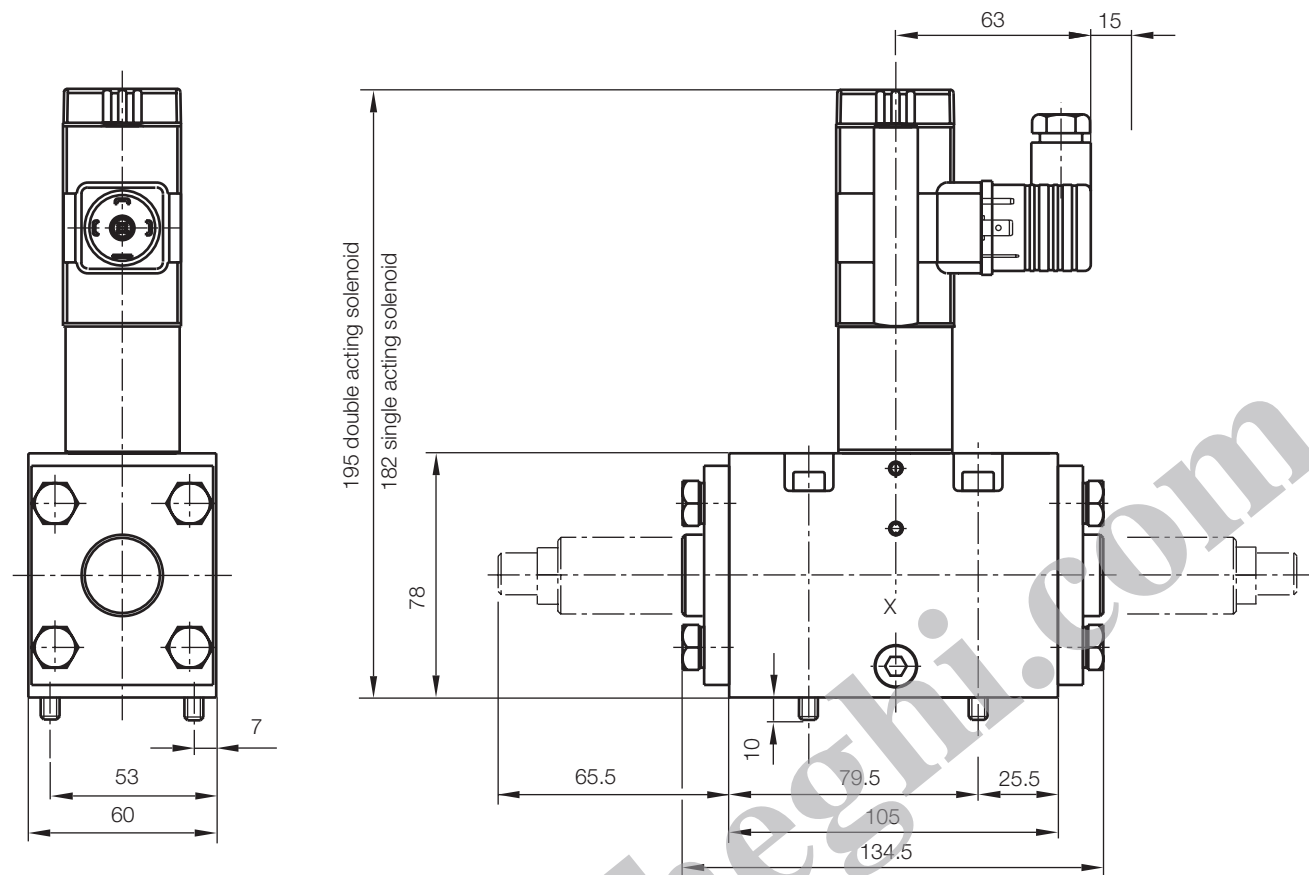
### Features

- piloted piston valve
- high switching power, short switching time
- energy saving through minimised flow resistance
- with internal or external pilot oil supply
- easy service: solenoid can be changed without leakage while the valve is under system pressure
- solenoid coil can be turned through 3 x 90°, allow alternative connector position
- only one connector, even with 4/3 way valves

### Options

- adjustable switching delay
- stroke limitation (replace one-way restrictor)
- electric monitoring of the spool position
- alternative symbols - data sheet: 14607-DSH
- alternative voltages

## Dimensional Drawing

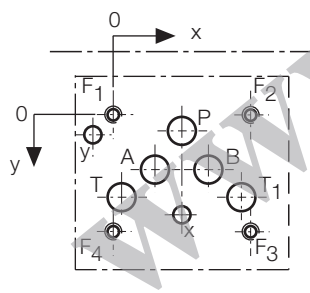


dimensions in mm

plug is not included

mounting screws are not included, 4 pcs. M6x75 DIN 912, M=14 Nm

## Port Connection Pattern NG 10 ISO 4401



view: fastening side of mounting plate

F: M6, Gewindetiefe min. 1,5 x Ø.

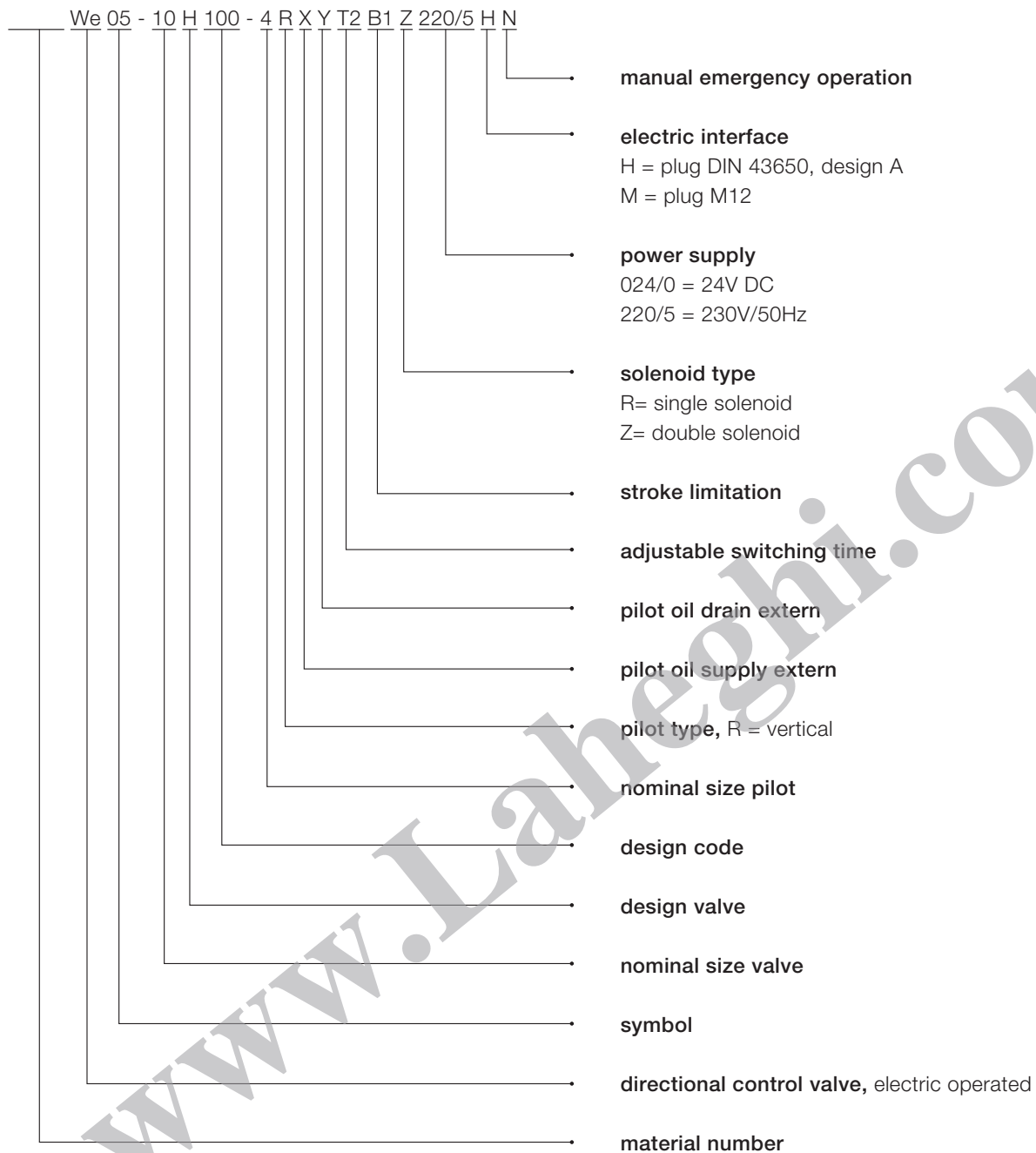
only at external supply x and y

various single or multiple mounting plates are available

	P	A	T	B	T1	F1	F2	F3	F4	x	y
Ø max [mm]	11.5	11.5	11.5	11.5	11.5	-	-	-	-	7	7
x [mm]	27	16.5	3.2	37.5	50.8	0	54	54	0	27	-8
y [mm]	6.4	21.5	32.5	21.5	32.5	0	0	46	46	39.6	8

## Type Code

---



www.Laheghi.com

This is a translated document. Original language: german.  
Legally binding language version of document: german.

Voith Turbo H+L Hydraulic GmbH & Co. KG  
Schuckertstraße 15  
71277 Rutesheim, Germany  
Tel. +49 7152 992 3  
Fax +49 7152 992 400  
sales-rut@voith.com  
[www.voith.com/hydraulic-systems](http://www.voith.com/hydraulic-systems)



**VOITH**  
Engineered Reliability